

# NEW MUSCLES. TO FLEX AT OTHER CARS.



**PROVOCATIVE NEW BONNET SCOOP**  
The new streamlined bonnet scoop with its 'low-drag intake' design, doesn't just provoke other cars. It calms the Scorpio down too, by air-cooling the engine.



**SIGNATURE FRONT GRILLE**  
The imposing new front grille boasts of the Mahindra lineage, and is sure to inspire awe in some and fear in many.



**MULTI-FOCAL HEADLIGHTS**  
Multi-focal reflectors multiply the power of these headlamps. Their 'Sunrays' design shines into the night, giving the Scorpio a blinding stare.



**EMBOSSED SIDE CLADDING**  
A bold embossing on the side cladding now taunts those unfortunate enough to be around this monster.



**ROAD ARMOUR BUMPERS**  
The Scorpio's new bumpers remind you of the armour on a gladiator. They're toughened, to defend the body. And tailored to demean other cars.



**CHUNKY DOOR HANDLES**  
The chunky new door handles add extra muscles to the Scorpio and make sure you need less muscle to open the doors.



**SPORTY NEW FOG LAMPS**  
The powerful fog lamps will illuminate any surprises, while also announcing the Scorpio's arrival quite sportily.



**POWERED ORVMs**  
The Scorpio comes with a pair of well trained, dual tone ORVMs. They're powered and obey your command at the push of a button.



**INTEGRATED FOOTSTEP**  
The rear footstep is seamlessly integrated into the rear bumper, giving those tailing the Scorpio, something to stare at.



# THE HUNK HAS A SOFT CORNER.

## PLUSH NEW DUAL TONE UPHOLSTERY

The Scorpio's plush interior cabin now comes draped in rich unique fabric and two seductive colour themes. Apart from the universally desired Black Allure theme, a classy new Tan & Beige upholstery option is now turning other cars red.

## NEW SEATS THAT HUG YOU

Fitted with new foam contours, the seats in the new Scorpio have been designed after meticulous 'Body Pressure Mapping' and are so ergonomically adapted to the human form, they hug.



**SWANKY 2-DIN AUDIO**  
Aesthetically designed buttons complement the large display. It supports almost any form that music might take, like MP3 CDs, SD cards and even USB drives.



**STYLISH PARKING BRAKE**  
The stylish parking brake is now quicker to engage, and looks sharper than ever.



**TECH MEETS CLASS AT THE CENTRE BEZEL**  
The futuristic centre bezel is a mesmerising mix between classy and techy. Every button and dial finished to perfection and tested for durability. The thoughtfully placed storage spaces outnumber your storage needs.

# UPTO THE NECK WITH TECH.

## THE ADVANCED MHAWK ENGINE

### SPRINTS MORE

2.2 L, 4-cylinder mHawk engine. 120bhp of power. 0 to 60 kmph in 5.7 seconds.

### HEATS LESS

Top-mounted intercooler keeps the engine cool.

### DRINKS LESS.

Bosch common rail system with solenoid injectors and 4-valves per cylinder fuel spray design improves fuel efficiency.

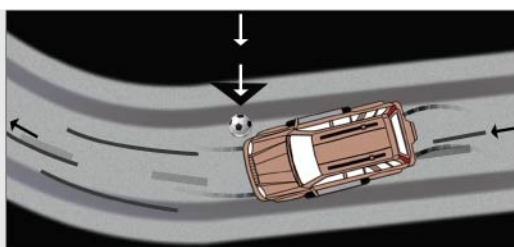
### WHINES LESS

Innovative two-stage chain drive system and hydraulic lash adjuster keep the engine quiet at all times.



## DUAL AIRBAGS

Safety always takes the front seat in the Scorpio. In the event of a collision, these dual airbags inflate instantly, protecting you from serious injury.



## ABS

When the situation demands hard braking on any skid-prone surface, the wheels won't lock up on you.



## CRUISE CONTROL

Maintain your speed at the push of a button, without having to press the accelerator.



FEATURES

TECHNOLOGY

- mHawk engine - available only in EURO III (only Automatic) & EURO IV
- 5-zone cushion suspension
- Digital Immobiliser\*
- 2 DIN Audio system with CD/MP3 player, USB & SD Card compatibility
- Integrated bonnet scoop
- Cruise control\*
- Audio control<sup>+</sup>
- Smart window (Anti-pinch - Driver and Co-Driver side only)<sup>+</sup>
- Powered ORVMs

SAFETY

- Collapsible steering column
- Side intrusion beams
- Crash protection crumple zone & child locks
- Fire retardant upholstery
- Tubeless tyres
- Anti-lock Braking System (ABS) (Optional)
- Limited Slip Differential (LSD) (Optional)
- Mechanical Differential Lock (Optional)

STYLE

- Alloy wheels (Optional)
- Mud flaps
- Illuminated spoiler
- Roof-top ski racks
- Wheel caps
- Fog lamps
- Two tone interiors
- Embossed side cladding
- New styled rear bumper with integrated foot step
- New styled headlamps
- Seats with new fabric

COMFORT

- Middle row sliding seats (Only in 8 seater)
- Full fabric seats
- Centre armrest on 2nd row seats
- Individual armrests on 1st row seats
- Tiltable steering
- HVAC with rear vents
- Swivel interior lamp
- Styled seat foams

CONVENIENCE

- Power steering
- Power windows
- Central locking
- Specially designed utility spaces on central bezel, IP & console
- Mobile charging facility for the front & middle row seats
- Rear window wash & wipe
- Rear demister
- Follow Me Home headlamps
- Illuminated footboards
- Theatre style interior illumination
- Side step
- Headlamp levelling switch
- Remote fuel lid opener

SEATING

- 8 seater
- 7 seater (Captain seats)

SPECIFICATIONS

Engine	NEF TCI	NEF CRDe	mHawk
Emmission Standard	Euro II	Euro III	Euro IV
Power (hp@rpm)	105@3800	115@3800	120@4000
Type	Turbo Charged Diesel	Common Rail Diesel	Common Rail Diesel
Torque (Nm@rpm)	258@1800	278@1700-2200	270@1600-2800
Cubic capacity (litres)	2.49L, 4 Cylinder	2.6L, 4 Cylinder	2.2L, 4 Cylinder
TRANSMISSION	5 Speed Manual / 6 Speed Automatic		
TYRES	P235 / 70 R16, Radial Tubeless		
SUSPENSION	2WD Independent, Coil spring, Anti Roll Bar 4WD Independent, Torsion bar		
Front			
Rear	Multilink, Coil spring		
BRAKES	Front Disc, Rear Drum		
Front	Disc & Calliper type, Twinpod & Tandem Booster		
Rear	Drum Type		
FUEL TANK CAPACITY	60 Ltrs		
TURNING CIRCLE RADIUS	5.6 m		
Max. GVW	2510 kg for 2WD 2610 kg for 4WD		
Kerb Wt.	1940 kg for 2WD 2040 kg for 4WD		
DIMENSIONS			
Wheel base, mm	2680		
Overall width, mm	1775		
Overall length, mm	4430		
Overall height, mm	1975		

COLOURS



All features and colours mentioned are not available on all models •Accessories shown are not part of standard equipment •Performance figures may differ in conditions other than test conditions •Vehicle body colour may differ from the printed photographs •In view of our policy of continuously improving our products, we reserve the right to alter specifications or designs without prior notice and without liability •Please check model details with your nearest dealer

Mahindra & Mahindra Ltd., International Operations, Automotive Sector,  
Road No. 13, Worli, Mumbai 400 018. Tel: 91-22-24905773 Fax: 91-22-24936459, www.mahindraautoworld.com

SCORPIO

DEALER STAMP:



THE NEW  
MIGHTY  
MUSCULAR  
SCORPIO.



\* Available only on mHawk  
+ Available only with Airbags





The new Mahindra Pik Up now comes fitted with more muscles so you can power through your workday and your weekend too. It's the perfect co-worker, with its great performance and high fuel economy. While also being the perfect partner for your getaways. Bringing with it plush interiors, and many features added for your comfort. And all this comes in an imposing new look that's sure to make heads turn.



#### STYLE

- Alloy wheels (Optional)
- Mud flaps
- Wheel caps
- Front fog lamps
- Two-tone interiors in Tan & Beige or Black Allure & Grey (Optional)
- New styled headlamps

#### COMFORT

- Full fabric seats
- Centre armrest on 2nd row seats
- Individual armrests on 1st row seats
- Tilttable steering
- HVAC with rear vents
- Styled seat foams

## DRESSED UP TO IMPRESS

The Pik Up's been working out, to add that muscular look to your drive. A unique honeycomb mesh front grille, new 'sunrays' reflecting headlamps, and the integrated bonnet scoop all make sure you grab attention wherever you go. Designed to impress others, the Pik Up's been styled for your comfort too. With features like power steering, power windows, remote central locking and powered OVRMs. You can even add audio controls to the steering. All to ensure your drive is comfortable no matter where you take off to.



#### TECHNOLOGY

- Digital Immobiliser <sup>+</sup>
- 2 DIN Audio system (with USB and SD card compatibility)
- Cruise control <sup>+</sup>
- Audio control <sup>+</sup>
- Smart window (Anti-pinch on driver & co-driver side only) <sup>#</sup>
- Limited Slip Differential (LSD) (Optional)
- Integrated functional bonnet scoop

#### SAFETY

- Collapsible or tilttable steering column
- Side intrusion beams
- Crash protection crumple zone & child locks
- Fire retardant upholstery
- Tubeless tyres
- Anti-lock Braking System (ABS) (Optional)

#### CONVENIENCE

- Power steering
- Central locking
- Power windows
- Follow Me Home headlamps <sup>+</sup>
- Powered ORVMs
- Headlamp levelling switch
- Remote fuel lid opener

<sup>+</sup> Only available on mHawk

## PUMPED UP TO PERFORM

The Pik Up's new muscles not only give it a beefy new look but also boast of impressive power. The payload and tugging ability make sure you can carry any load through any terrain. This boost in power is backed by great safety, for you and your vehicle. With the option of adding features like the Digital immobiliser, ABS, airbags, Limited Slip Differential and Mechanical Differential Lock. While being sturdy and reliable, the Pik Up even offers great adventure with its flair for all things 4X4.





AND THE WEEKEND.



Mahindra  
PIKUP

Mahindra  
PIKUP

All features and colours mentioned are not available on all models • Accessories shown are not part of standard equipment • Performance figures may differ in conditions other than test conditions • Vehicle body colour may differ from the printed photographs • In view of our policy of continuously improving our products, we reserve the right to alter specifications or designs without prior notice and without liability • Please check model details with your nearest dealer • Models available in both Left Hand Drive(LHD) or Right Hand Drive(RHD)

Mahindra & Mahindra Ltd., International Operations, Automotive Sector, Road No. 13, Worli, Mumbai 400 018. India. Tel: 91-22-24905773, Fax: 91-22-24936459, [www.mahindraautoworld.com](http://www.mahindraautoworld.com)

SPECIFICATIONS

Engine	NEF TCI		NEF CRDe		mHawk	
Emission Standard	Euro II		Euro III		Euro IV	
Power (hp/@rpm)	105@3800		115@3800		120@4000	
Type	Turbo Charged Diesel		Common Rail Diesel		Common Rail Diesel	
Torque (Nm/@rpm)	258@1800		278@1700-2200		270@1600-2800	
CC (litres)	2.49L, 4 Cylinder		2.6L, 4 Cylinder		2.2L, 4 Cylinder	
Transmission	5 Speed Manual					
Suspension (Front)	2WD Independent, Coil spring, Anti Roll Bar 4WD Independent, Torsion bar					
Suspension (Rear)	Leaf spring					
Brakes (Front)	Disc & Caliper Type, Twinpod & Tandem Booster					
Brakes (Rear)	Drum Type					
Transfer Case (4WD only)	Borg Warner - Manual Shift / Electric Shift					
Turning Circle Radius (mts)	6.3					
Seating Capacity (Including driver)	5 seater					
Tyres	P245/75 R16, Radial Tubeless					
	DC 2WD			DC 4WD		
Weight (Kgs.)	Euro II	Euro III	Euro IV	Euro II	Euro III	Euro IV
GVW	3150	3150	3150	3150	3150	3150
Kerb	2050	2050	2020	2150	2150	2120
Dimensions						
Overall Length (mm)	5118					
Overall Width (mm)	1770					
Overall Height (mm)	1942					
Wheel Base (mm)	3040					
Ground Clearance (mm)	210					
Cargo Box (LxBxH) (mm)	1530 x 1520 x 550					
Fuel Tank (lters)	80					



Diamond White



Mist Silver



Toreador Red



Rocky Beige



Java Brown



Fiery Black

MUSCLE YOUR WAY  
THROUGH THE WEEK.

Dealer Stamp





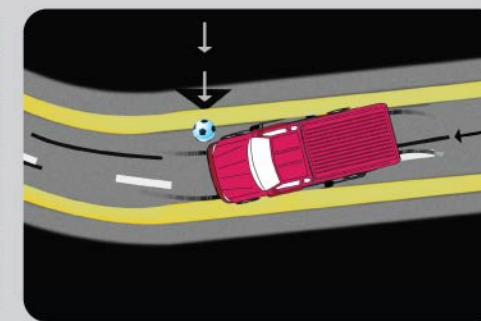


More muscles. For work and for play. The Mahindra Pik Up now comes with an imposing new look and impressive new style that makes sure it commands attention wherever it goes. Practical and sturdy, it is perfect for those who take their work, and their play, very seriously.



## POWER DRESSED

The Pik Up has been fitted with new muscles to ensure that you mark your turf in style. Announce your arrival with the signature front grille. And a sporty new integrated bonnet scoop. The 'sunrays' reflecting headlamps and the strapping new bumpers give you a commanding edge, no matter where your work takes you.



## POWER PACKED

With a muscular co-worker like this, you can take on greater load while covering tougher ground. The 2.49L diesel engine provides great power, and gives superior 4X4 ability.

The Pik Up has been packed with a range of handy conveniences. Like remote controlled central locking, power windows, power steering and superior air conditioning. You also have the option of adding audio and cruise controls to the steering wheel.



All this power comes in a sturdy and safe shell, with the option of adding airbags, ABS, Limited Slip Differential and Mechanical Differential Lock. With these numerous safety features and high fuel economy, the Pik Up looks out for itself, and for you too.



*\*Tipper is a local market application*

## YOURS TO OUTFIT

Keeping your unique work needs in mind, the Pik Up is also available in cab and chassis form. It's easily customisable to varied cargo requirements and can even accommodate handy additions like a tipper.



#### TECHNOLOGY

2 DIN audio system (with USB and SD card compatibility)  
Integrated functional bonnet scoop  
Limited Slip Differential (LSD) (Optional)  
Mechanical Differential Lock (Optional)  
Audio controls on steering wheel (with the airbags and mHawk package)  
Cruise control (only with mHawk)

#### SAFETY

Collapsible or tiltable steering column  
Side intrusion beams  
Crash protection crumple zone  
Fire retardant upholstery  
Tubeless tyres  
Anti-lock Braking System (ABS) (Optional)

#### STYLE

Alloy wheels (Optional)  
Full wheel caps  
Front fog lamps  
Stylish grey interiors  
New styled headlamps

#### COMFORT

Full fabric seats  
Tiltable steering  
Styled seat foams to enhance comfort

#### CONVENIENCE

Power steering  
Power windows  
Central locking  
Side step  
Remote fuel lid opener

#### SPECIFICATIONS

Engine	NEF TCI		NEF CRDe		mHawk	
Emmission Standard	Euro II		Euro III		Euro IV	
Power (hp@rpm)	105@3800		115@3800		120@4000	
Type	Turbo Charged Diesel		Common Rail Diesel		Common Rail Diesel	
Torque (Nm@rpm)	258@1800		278@1700-2200		270@1600 -2800	
CC (litres)	2.49L, 4 Cylinder		2.6L, 4 Cylinder		2.2L, 4 Cylinder	
Transmission	5 Speed Manual					
Suspension (Front)	2WD Independent, Coil spring, Anti Roll Bar					
	4WD Independent, Torsion bar					
Suspension (Rear)	Leaf spring					
Transfer Case (4WD only)	Borg Warner - Manual Shift / Electric Shift					
Turning Circle Radius (mts)	6.3					
Seating Capacity (including driver)	2 seater					
Tyres	P245/75 R16, Radial Tubeless					
	SC 2WD			SC 4WD		
Weight (Kgs.)	Euro II	Euro III	Euro IV	Euro II	Euro III	Euro IV
GVW	3150	3150	3150	3150	3150	3150
Kerb	1990	1990	1960	2090	2090	2060
Dimensions						
Overall Length (mm)	5118					
Overall Width (mm)	1770					
Overall Height (mm)	1860					
Wheel Base (mm)	3040					
Ground Clearance (mm)	210					
Cargo Box (LxBxH) (mm)	2294 x 1520 x 550					
Fuel Tank (litrs)	80					

The Pik Up is available in either Left Hand Drive (LHD) or Right Hand Drive (RHD), depending on the market.

**Mahindra**  
**PIKUP**



Mahindra & Mahindra Ltd., International Operations, Automotive Sector, Road No. 13, Worli,  
Mumbai 400 018. India. Tel: 91-22-24905773, Fax: 91-22-24936459, [www.mahindraautoworld.com](http://www.mahindraautoworld.com)

Accessories shown in the brochure are not a part of standard equipment. Vehicle body colour may differ from the printed photographs.



Diamond White



Mist Silver



Arctic White



Java Brown



Toreador Red



Fiery Black

Dealer Stamp



**NEW MUSCLES  
TO WORK WITH**



**Mahindra**  
**PIKUP**